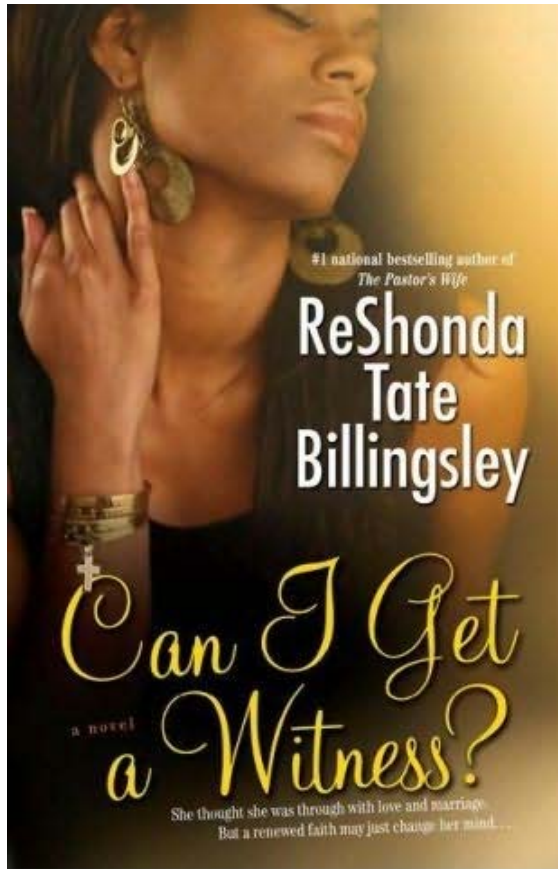


West Regional Branch Library

Start Here; Go Anywhere



DIRECTIONS: From Northside: Take I-295S to Exit 21B for I-10W, then Exit 351 for Chaffee Rd. Turn right, travel approx. 1.2 mi; library will be on your left. **From Southside:** Take I-95N to I-10W, Exit 351 for Chaffee Rd. Right on Chaffee, then travel approx. 1.2 mi; Library will be on your left.

Hope to see you there!



“ A A A ”
(African - American
Authors)
Book Club

Join us at the West Regional Branch of the Jacksonville Public Library on Wednesday, June 3, 2009, at 6:00 PM for our Book Club meeting in Community Room B. We will discuss *Can I Get a Witness?*, a novel by ReShonda Tate-Billingsley. Check out a copy today and participate in the discussion on June 3!

Details

- ◆ No pre-registration required to attend.
- ◆ This event is free and open to all adults!

Questions?
Yuri Jewitt, Adult Program Facilitator
West Regional Library
1425 Chaffee Rd S
Jacksonville, FL 32221

Phone: 904-693-1448
Fax: 904-693-1470
E-mail: yjewitt@coj.net